

CAROLWOOD CHRONICLE

Issue 10

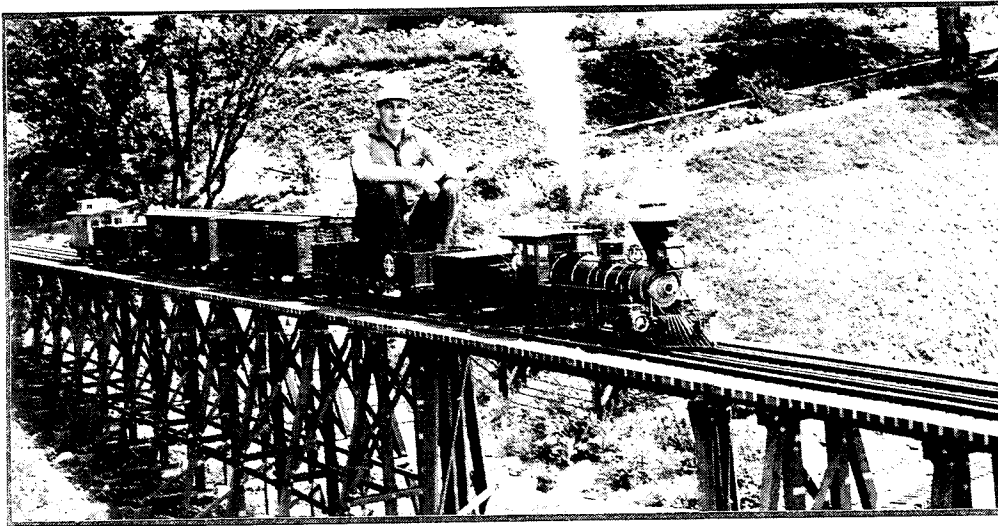


Spring/Summer 2000

OFFICIAL JOURNAL OF THE CAROLWOOD PACIFIC HISTORICAL SOCIETY

Free Event Scheduled July 16

Walt Disney's Lilly Belle Large Scale Steam Engine Built 50 Years Ago



Walt stops on the Carolwood Pacific R.R. 46' trestle for a photo by Roger Broggie.

Griffith Park, Los Angeles—On July 16, members of the Carolwood Pacific Historical Society will join with members of the Los Angeles Live Steamers at Walt Disney's Carolwood Pacific Barn to celebrate the 50th anniversary of Walt's favorite steam engine, the CP 173, *Lilly Belle*.

The live steam model was built in the Machine Shop at Disney Studios in nearby Burbank, under the direction of Roger Broggie, who later became one of the first Imagineers selected by Walt to build Disneyland.

The one-eighth scale miniature working model was patterned after an 1872 diamond-stacked, wood-burning engine that ran until 1909 on the Central Pacific Railroad, hauling timber, produce and passengers up and down the central valleys of California. Its bright brass work and balanced design appealed to Walt.

The fact that it was the first steam locomotive built in California, appealed to Walt's interest in railroad history.

Prior to the completion of the intercontinental railway in 1869, engines were shipped around the Horn of South America from factories in the east, such as Baldwin in Philadelphia. With the completion of Central Pacific's shops in Sacramento and the availability of iron ore by rail from the east, the company could build its own railroad equipment.

When Walt began looking for a locomotive design, Roger Broggie recommended he meet with renowned railroad historian Jerry Best, who had built a half-inch scale live steam CP 173 for the Golden Gate International Exposition at San Francisco in 1939.

When Walt saw the model at Jerry's home, he decided immediately that it was the engine he wanted—only much larger. Fortunately, Jerry knew Dave Joslyn, who worked at the Southern

(Continued on page 2)

Silverado Winery & Wine Train Highlight Fall Napa Valley Tour

Napa Valley, CA — Members of the Carolwood Pacific Historical Society continue their tradition of an annual outing to a winery with a weekend of activities in the world renowned Napa Valley wine district this mid-September.

Long recognized as one of the world's leading producers of wine, Napa Valley has emerged as a popular tourist attraction, drawing millions of visitors from countries throughout the world.

The best time to visit is during the fall, when the heat of summer has given way to milder temperatures, the leaves are beginning to turn gold and crimson, and crushing of the grape harvest has commenced.

According to Tony Friscia, Society Napa Event Chairman, among the scheduled activities is a champagne reception on Friday, Sept. 15, hosted by Sharon and Michael Broggie, co-founders of the Society, at the John Muir Inn in Napa. The reception will include hors d'oeuvres, champagne, and a blind wine tasting contest. Members are asked to bring their favorite Chardonnay and/or Cabernet for competitive tasting. Prizes will be awarded to the top finishers.

Saturday will include a Society ceremony commemorating the new tasting facility at Silverado Winery, which is co-owned by Walt Disney's daughter Diane and her husband, Ron Miller.

Saturday evening will feature a gourmet dinner in the dome dining car aboard the popular Napa Valley Wine Train,

(Continued on page 3)

Carolwood Pacific Timetable & Bulletin Board

2000 Events, Special Dates,
Notices, Arrivals & Departures.
For Updates Please Check
the Society Web Site:
<http://www.carolwood.com>.

July 16: 11 am - 3 pm, 50th Anniversary of
Lilly Belle, Walt Disney's Carolwood Pacific
Barn, LA Live Steamers, Griffith Park

July 23: Noon - 5 pm, Lilly Belle Commemorative Merchandise and Marceline's plans for Walt Disney's Centennial Celebration, National Fantasy Fan Club, Hyatt Regency Alicante Hotel, Anaheim, CA

Aug. 6: California Express Railroadiana Show, UFCW Hall, corner of Stanton Ave. & Crescent Ave., Buena Park, CA

Aug. 20: Walt's Carolwood Barn Tours, LA Live Steamers, Griffith Park

Labor Day: Dedication of *Ward Kimball* Engine No. 5, Disneyland (tentative)

Sept. 5-8: Official Disneyana Convention, Walt Disney World Resort

Sept. 15-17: Silverado/Napa Winery Weekend, Napa Valley, CA beginning a 6 pm Fri.

Sept. 17: 11 am - 3 pm, Walt's Carolwood Barn Tours, LA Live Steamers, Griffith Park

Oct. 15: 11 am - 3 pm, Walt's Carolwood Barn Tours, LA Live Steamers, Griffith Park

Nov. 5: Joint event with "Once Upon a Classic" Club—Private Barn Tour and *Ward Kimball* presentation, Gene Autry Western Heritage Museum.

Special Notice

Members are invited to be on the Volunteer Crew each third Sunday in the month to staff Walt's Barn. Report to the Barn at 10 am. Barn opens at 11 am and closes at 3 pm. Contact Barn Crew Chief Terry Lynn for more information: highgreen@earthlink.net or 760.729.1101

Change of Address

Please send your new address to:
CPHS, 1032 Amberton Lane
Thousand Oaks, CA 91320-3514
e-mail to: broggie@gte.net
fax to: 805-498-0516

WALT DISNEY'S OLD TIME RAILROAD

CASTINGS AND COMPLETE DRAWINGS
WILL SOON BE AVAILABLE

LOCOMOTIVES • METAL GONDOLAS • BOX CARS
TRACK FITTINGS • SWITCH LAMPS • CABOOSE STOVES

ALL IN 1 1/2" SCALE - 7 1/4" OR 7 1/2" GAUGE

WALT DISNEY MINIATURE RAILROAD

2400 W. ALAMEDA AVE.

BURBANK, CALIFORNIA

In the early 1950s, this ad appeared in hobby magazines offering railfans an opportunity to own their own Lilly Belle loco, and more.

Lilly Belle

Continued from page 1

Pacific Railroad office in Sacramento, and was able to obtain a full set of engineering drawings for the 173. (Southern Pacific had acquired the Central Pacific to expand its intrastate trackage.)

A master draftsman, Ed Sargeant, who worked in the Machine Shop for Roger, carefully redrew the plans to a miniature scale of one and one-half inches to the foot, or one-eighth of full size.

After the engine and tender were completed in 1950, during which, Walt becoming a willing "apprentice" in the Studio's Machine Shop, it was taken to the Disney family's new home at 355 North Carolwood Drive in the Holmby Hills area of Los Angeles. There it became the pride of the Carolwood Pacific Railroad that operated on 2,615 feet of custom-built trackage that was later donated to the LA Live Steamers. (Note that the name Carolwood Pacific duplicates the Central Pacific's initials.)

Inside his Carolwood Barn, Walt applied the training he received in the Machine Shop and eventually acquired a complete set of machine and woodworking tools to maintain his railroad. Walt was proud of the highly detailed yellow bobber caboose he built in his Barn (which is now displayed inside the Main Street Station at Disneyland).

After three years of operating his miniature railroad nearly every weekend, Walt decided that he wanted to open a small ride park next to the Studio, with his *Lilly Belle* as the main attraction.

Like many of Walt's ideas, the concept grew and eventually became a much larger railroad in five-eighths scale running around a themed amusement park.

As with the miniature, the rolling

stock for Disneyland, including the two steam engines, *C. K. Holiday* and *E. P. Ripley*, was built in the Studio's Machine Shop. (Actually, railroad equipment construction spilled over onto the large sound stages—upsetting several Studio filmmakers.)

Luckily, the gauge of the five-eighths scale model railroad turned out to be the same 36 inches as full narrow gauge. Standard gauge is 56.5 inches.

Due to heavy ridership, more passenger capacity was needed. Two narrow gauge Baldwin engines were purchased and restored in the Machine Shop and added to Disneyland's roster along with new trainsets. They were *Fred Gurley* in 1958 and *Ernest S. Marsh* in 1959. Park engines are named for Santa Fe officials. Until 1974, Santa Fe was the sponsor of the railroad, which Walt personally owned along with the Monorail, through Relaw Enterprises.

This fall, another antique Baldwin steam engine will be added at Disneyland, and will be named in honor of Society Governor *Ward Kimball*.

The four restored vintage steam engines in the Magic Kingdom at Walt Disney World Resort are *Walter E. Disney*, *Roger E. Broggie*, *Roy O. Disney*, and yet another *Lilly Belle*. That makes two large scale miniature steam engines, a VIP coach, a full-sized narrow gauge locomotive, and soon, 1,500 G scale models, all named *Lilly Belle* in honor of Mrs. Walt Disney! According to Diane Disney Miller, "Lilly Belle" was not her dad's nickname for her mother. It was a name he gave his engine in honor of Lillian, who graciously agreed to allow Walt to run his railway right-of-way entirely around, over, through and under

(Continued on page 3)

Silverado Winery

(Continued from page 1)

which has been reserved exclusively for Society members and guests. September 16th marks the anniversary of the Wine Train and a special Society presentation to the train's founder, Vincent DeDomenico, will mark the event. (Please see *Napa Valley Wine Train History* on page 5.)

On Sunday, members will select from a variety of self-guided activities such as winery touring along the Silverado Trail, bicycling and visiting the popular Sonoma Train Town Railroad.

Participants will receive specially designed merchandise commemorating the Napa Valley Party and dedication at the Silverado Winery.

Since a number of Society members live

within daily driving distance of Napa Valley, and there is a full range of lodging choices in the area, reservations will be made directly by members. A list of hotels, motels and inns is enclosed with this newsletter or can be obtained by e-mail request via broggie@gte.net or by fax from the Society.

The Friday evening reception is being held at John Muir Inn at 1998 Trower Avenue, which will also serve as event headquarters.

The fall season is one of the most popular times to visit Napa and Sonoma valleys. Many of the lodging facilities are sold out every weekend. Tony Friscia has blocked a limited number of rooms at the John Muir Inn for Society members, which will be held until August 15, and are available on a first-come basis. The Society must be

mentioned when making reservations. The Inn's telephone number is 707-257-7220 or 800-522-8999.

Access to Napa Valley by air is either through Sacramento or Oakland. Driving time is about 50 minutes. Free route maps are available via www.mapquest.com. or from airport rental car agencies. Early plane and car rental reservations are recommended.

Once the final list of attendees is set on August 15, it will be shared so members who wish to can contact each other for pooling of rental vehicles. There is a carpool check box on the official registration form that appears on page 5 in this newsletter. *mm*

Lilly Belle

(Continued from page 2)

their five acre, elaborately landscaped residence.

+ + +

In honor of Disneyland's 40th anniversary, Tokyo Disneyland wanted to display Walt's *Lilly Belle* locomotive in an elaborate display designed by Imagineering telling how the original park's origin is found in Walt's miniature railroad. Since the family had already loaned the engine to Disneyland—the only Disney Park that Walt actually walked in—an alternative was suggested.

Roger Broggie, Jr., who worked for Disney Imagineering for 25 years, was commissioned through Retlaw Enterprises to build another *Lilly Belle*. Using parts that his father originally created for a ten-wheeled locomotive to be added to Carolwood, Roger fashioned a duplicate engine down to the smallest detail. During the nine-month construction period, Roger received help from his son Garry and grandsons Brian and David. Thus, four generations of the Broggie family worked on the engine.

It was displayed for two years at the Tokyo Park's Gallery. It is now displayed in the lobby at the Disney family's office building in North Hollywood, under the watchful care of Society member Jeff Kaye, who is Retlaw's controller.

After seeing Walt's engine on the *Disneyland* television show and in train magazines, other live steamers wanted to

own a *Lilly Belle*.

Wanting to share his hobby, Walt set up a small personal company and advertised "Walt Disney's Old Time Railroad" in hobby and train magazines, offering to sell builder's drawings, box cars, track fittings, caboose stoves, castings and a complete, ready-to-run *Lilly Belle*.

Initially, orders were handled through the Studio's Machine Shop. As demand grew, Walt set up a company through a post office box in Reseda, "The Miniature Locomotive Company." A live steamer named Dick Bagley, who worked for Roger, handled the orders.

Later, companies such as Little Engines and Railroad Supply Company offered versions of the CP 173. Side-by-side there are apparent differences between Walt's original *Lilly Belle* and other engines.

+ + +

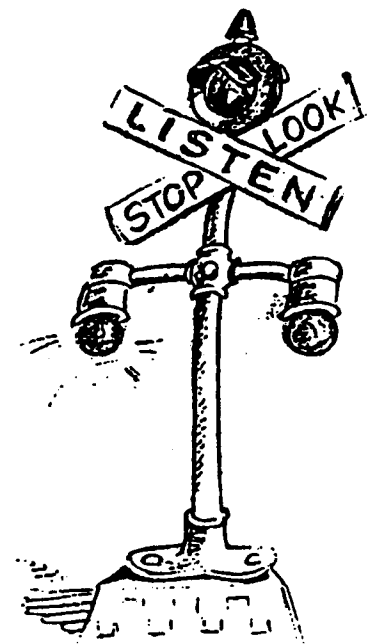
On July 16, at Walt's Carolwood Barn, Roger Broggie, Jr. will discuss the building of the Disney CP 173 and exhibit the original wood patterns. A number of LALS members who own CP 173s are going to display them. Society member Jay Carsman, who is also a member of LALS, plans to run his handsome CP 173, which he recently renovated.

Retired Imagineer Morrie Houser, who joined Walt's WED Enterprises in 1954, will be on hand to discuss building his CP 173, the beautiful "work-in-progress" chassis that is displayed in the Barn.

Walt's Barn will be open on July 16 from 11 am to 3 pm. Admission and

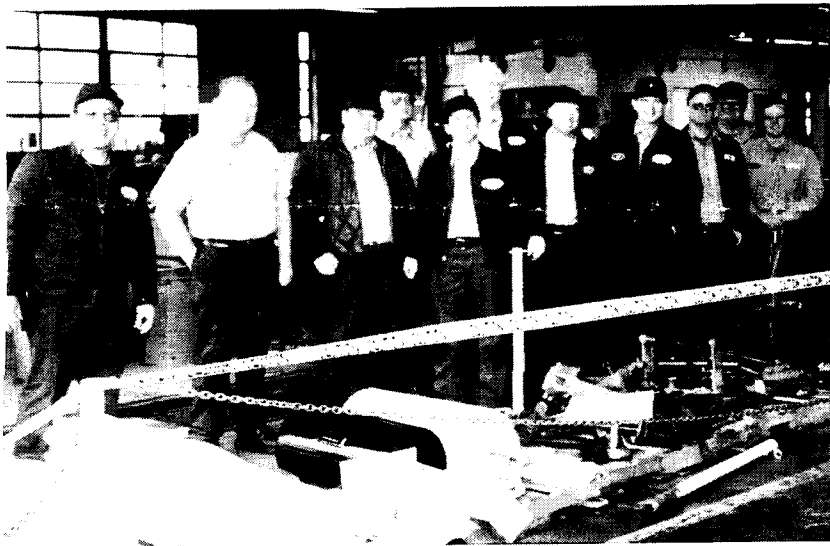
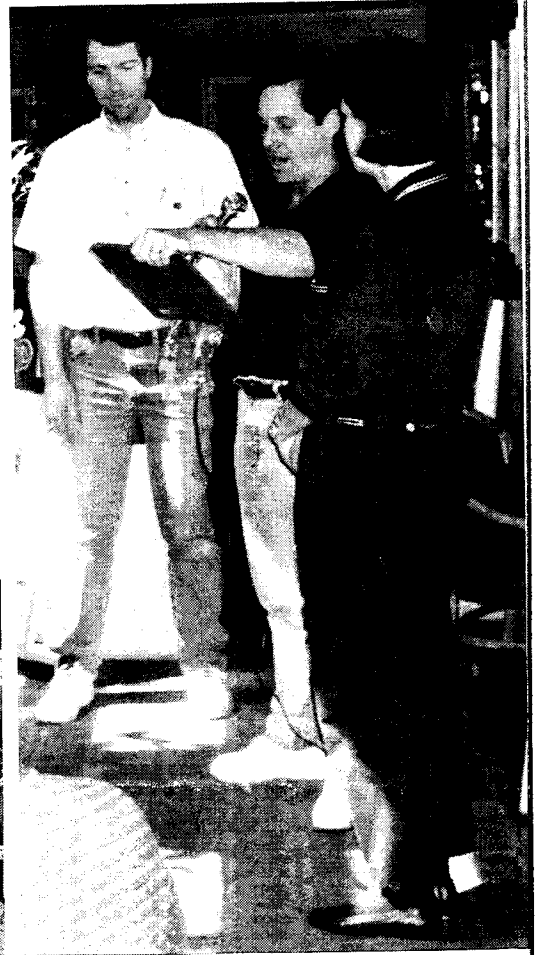
parking is free. Picnic areas are available.

The Barn is located in the Los Angeles Live Steamers facility east of Travel Town in Griffith Park at 5202 Zoo Drive; off the 134 Freeway between Forest Lawn Drive and Victory Boulevard exits. Main freeway coordinates are west of the Golden State 5 near its interchange with the 134 Freeway. Note that there is no westbound 134 connector when traveling south on the 5. Exit at Western. Go west to Victory, then south to Zoo Drive and turn right to the LA Live Steamers, which is about a quarter-mile on the left. *mm*



The Observation Car

...featuring pictures from here and there.



Captions read clockwise from top left...

Marie and Ollie Johnston enjoy a live steam run in their backyard during their 50th Anniversary Steam-Up Party hosted by the Carolwood Pacific Historical Society.

Photo by Darrell Holmquist

Society Chairman Michael Broggie presents the Richard Thompson Membership Award to Miguel Fernandez as Samma Thompson looks on. Photo by Sharon Broggie

In Walt's hometown, members of the Marcelline Chamber of Commerce join co-owners Terry Lynn and Joe Sturguess at the ribbon-cutting for their new Train Emporium on Main Street USA. Photo by Robbin Lynn

Steam train cast members gather behind the parts and pieces that will soon become Disneyland's Engine No. 5, Ward Kimball. CPHS file photo

Napa Valley Wine Train History

Samuel Brannan founded the Napa Valley Railroad Company in 1864. In 1885, the Southern Pacific Railroad Company purchased the line and it continued in operation for the next 102 years until sold to the Napa Valley Wine Train, Inc., in 1987.

Vincent DeDomenico, chairman and principal shareholder of Napa Valley Wine Train, is a veteran of more than 50 years in the food business. His success with the Golden Grain Macaroni Company and its most famous product, "Rice-a-Roni," is legendary. The pasta dishes served on board are "Mama" DeDomenico's old family recipes.

As principal shareholder and president of Golden Grain, Mr. DeDomenico acquired Ghirardelli Chocolate Company of San Francisco from the family of Domingo Ghirardelli, who founded the company in 1852. A large selection of Ghi-

rardelli products is available in the Wine Emporium at the Wine Train Station.

Mr. DeDomenico was vice president of the United States for the *Confrerie de la Chaine des Rotisseurs*--the world's foremost wine and food society with chapters in 122 countries. In Paris, he received the Gold Metal of Honor for his efforts to promote the marriage of gourmet food with great wines.

On Sept. 16, 1989, after complete restoration under Mr. DeDomenico's direction, the Napa Valley Wine Train made its first revenue run, travelling 36 miles through the historic wine valley to the quaint village of St. Helena and return.

The Society will celebrate the anniversary of the railroad with a special citation to Vincent DeDomenico for fostering the pleasure of fine food and wine, and preserving vintage railroading. ■■■

Registration Form

■■■ CAROLWOOD PACIFIC HISTORICAL SOCIETY SILVERADO/NAPA VALLEY PARTY RESERVATION ■■■

Please reserve ___ ticket(s) at \$150 each for the Silverado/Napa Valley Party including Commemorative Merchandise, Friday Champagne Party & Wine Tasting Contest, Saturday Silverado Winery Tour and evening three-hour Wine Train Gourmet Dinner. Gentlemen are requested to wear jackets for the Train Dinner. **Note: Accommodations are not included in this reservation.** Room reservations should be made directly at the John Muir Inn: 800-522-8999, or refer to the enclosed listing of additional Napa hotels and inns. Due to heavy seasonal demand, it is strongly recommended that room and travel reservations be booked immediately.

Please print clearly:

Name(s) _____

Street Address _____

City/State/Zip _____

Day Phone _____ Evening Phone _____

E-mail _____ Fax _____

Amount enclosed \$ _____ Date _____

Please add name to car pooling list.

■■■ Please send this form and check to: CPHS, 1032 Amberton Lane, Thousand Oaks, CA 91320-3514

To compete in the Friday Wine Tasting Contest, bring your favorite Cabernet and/or Chardonnay for entry. Prizes awarded for best judged entries (plus bragging rights).

Recommend copying this form for your records.



Carolwood Chronicle

Official Journal of the
Carolwood Pacific
Historical Society
1032 Amberton Lane
Thousand Oaks, CA
91320-3514

Board of Governors

Michael Broggie
Michael Campbell
Miguel Fernandez
Bob Gurr
Darrell Holmquist
Ollie Johnston
Ward Kimball
Terry Lynn
Diane Disney Miller
Downs Prior
Scott Rhodes
Bob Witter

Information is available by con-
tacting the Society or:

<http://www.carolwood.com>
Steve Broggie, Webmaster

The Society is an independent membership
organization and is not affiliated with
The Walt Disney Company.

Carolwood Pacific Railroad and CPHS
related logos and designs are the
copyrighted property of the
Walt Disney Family Foundation.

Opinions expressed are those
of the writers and not necessarily that
of the Foundation or Society.

Sharon Charmagne, Publisher
Michael Broggie, Editor
Miguel Fernandez, Graphic Design
Contributors: Michael Campbell, Ray Haller,
Darrell Holmquist, Downs Prior

© Copyright 2000
Walt Disney Family Foundation

View from the Cupola

The Society Steam-Up Party in March
at the home of Ollie and Marie Johnston is
now pressed into our book of memories.
Words seem inadequate to express the grat-
itude of members and guests who visited
the home of one of Walt's true Disney Leg-
ends. An additional bonus was the arrival
of Ward Kimball and Frank Thomas, the
remaining members of Walt's storied "Nine
Old Men" of Disney animation. With all of
this animation talent present, it seemed
rather odd that the occasion celebrated 50
years of the LaCanada Valley Railroad, a
large scale miniature railway running
around the Johnston's Flintridge home.
Rather than mingling with the Hollywood

First Class Mail
Address Correction Requested



Set, this is the partying Walt enjoyed most.

Next year, which marks the centennial of
Walt's birth, Dec. 5, 1901, major activities are
planned for Society members. Noteworthy is
the celebration planned for Marceline, Mis-
souri, Walt's boyhood town. With more infor-
mation will be member Kaye Malins and oth-
ers representing Marceline, at the Society's
booth at the NFFC Show & Sale on Sunday,
July 23, Hyatt Alicante Hotel on Harbor
Boulevard a mile south of Disneyland.

Another much-anticipated event is the
dedication of the *Ward Kimball* locomotive at
Disneyland. Plans are still in development as
full restoration of the 1904 Baldwin steam
engine continues under member Scott Smith,
who heads the Park's steam train facilities.
Scott is confident that the engine will be
ready in time for a Labor Day dedication
event. Watch the Society Web site for up-
dates.

Among activities members will enjoy
mid-September in Napa Valley is a gourmet
dinner aboard the famous Napa Valley Wine
Train. According to Ron Miller, co-owner of

Silverado Winery, the food and service on
the train are excellent.

While parking and admission to Walt's
Barn is always free, the Society encourages
voluntary donations to the LA Live Steam-
ers. Because merchandise is never sold in
Walt's Barn, *Lilly Belle* Anniversary mer-
chandise will be available at the NFFC's
national convention in Anaheim on Sunday,
July 23, or by direct mail, and through the
Society's Internet site: www.carolwood.com.
Exclusive items include a wristwatch,
sweatshirt, polo shirt, cap and a five-color
enameled pin. We hear that pin trading has
become a major passion among Park cast
members.

On behalf of the Society's Board, it is
my pleasure to welcome Terry Lynn as its
newest Governor. Among his many services
for the Society, Terry is performing an out-
standing job as Crew Chief of Walt's Barn.

The Board extends its appreciation to
Charter Member David Flesh, who becomes
a Governor Emeritus. ❖

—Michael Broggie