

“THE HAPPIEST TRAIN ON EARTH” HIGHLIGHTS

WALT DISNEY’S PASSION FOR RAILROADING . . . BY MICHAEL CAMPBELL

Sacramento — Opening October 4th at the California State Railroad Museum in Old Sacramento is the new exhibit *“The Happiest Train On Earth: Walt Disney’s Backyard Railroad.”* This exhibit will explore, through vintage photographs, video interviews and rare artifacts, the story of how railroads influenced one of the greatest figures of the 20th Century. The display continues through March 31, 2003.

The exhibit’s highlight is

built by Walt, Roger Broggie Sr. and members of the Studio’s machine shop. Also included are a number of Walt’s personal items, some never before publicly displayed, as well as many artifacts from the collections of CPHS Society members.

CPHS Governor **Michael Campbell** is chairing the event. He said that “the idea for the exhibit was sparked from the excellent show presented last year at the Ronald Reagan Presidential Library. I’ve been a member of the California State Railroad Museum for a number of years. It occurred to me that the Museum would provide the perfect venue to share the Carolwood Pacific story with other railroad fans that may not be aware of the importance of trains in Walt Dis-

ney’s life and work.”

Campbell continues, “**Michael Broggie** and I approached the Walt Disney Family Foundation to determine their interest in supporting such an exhibit. We then met with the CSRSM Foundation; both organizations endorsed the concept and we immediately immersed ourselves in the planning. We assembled a team that includes Michael and **Sharon Broggie**, Society Governor **Darrell Holmquist**, Society Member **Todd Levy**, and two representatives from the Museum, Peter Scott and Paul Hammond. [Ed. note: Coincidentally, Paul served as editor on Michael Broggie’s book, “Walt Disney’s Railroad Story.”]

In addition to Carolwood Pacific items, the exhibit will

feature articles from the Disneyland, Walt Disney World and Fort Wilderness Railroads, animation art, items from “The Great Locomotive Chase,” and railroad-themed Disney products that date back to the early 1930s. Campbell concludes, “We hope that visitors to the Museum will gain a better understanding as to how a passion for railroading inspired one of the most celebrated personalities of modern times.”

Note: Society Members are invited to preview the exhibit at a private reception on October 3. For more information, please contact the Carolwood Pacific Historical Society at 805-489-2336 or the CSRSM at 916-445-6645

INSIDE THIS ISSUE:

| | |
|--------------------------------|-------|
| <i>Happiest Train on Earth</i> | 1 |
| <i>Letter from the Editor</i> | 1 |
| <i>Another Point of View</i> | 2 |
| <i>The Mail Car</i> | 3 |
| <i>Celebrating Ward’s Life</i> | 3 |
| <i>A Pictorial</i> | 4 & 5 |
| <i>Board of Governors</i> | 6 |
| <i>Walt’s C’s of Success</i> | 6 |
| <i>Calendar of Events</i> | 7 |
| <i>View From the Cupola</i> | 8 |

LETTER FROM THE EDITOR

BY STEVE DEGAETANO

With the unveiling of Hartland’s new G scale model of Disneyland Railroad No. 4 *Ernest S. Marsh*, I thought that this might be a good time to remind you that collecting Disney train and railroad items can be fun and rewarding, and best of

all—it doesn’t have to be expensive! As many of you are aware, pin collecting is all the rage. There are a number of fine looking Disneyland Railroad and Walt Disney World Railroad pins that have been produced over the years, and many can be had for only a

few dollars. One of my favorites is the “sign” pin that shows the Disneyland Railroad herald. Also available is what is known as the “D” pin, showing the front of a steam locomotive, and a “station” pin, depicting

(Continued on page 7)

ANOTHER POINT OF VIEW

BY SHARON BROGGIE



Members of the Society prepare for the ride aboard the Yosemite Mountain Sugar Pine Railroad.

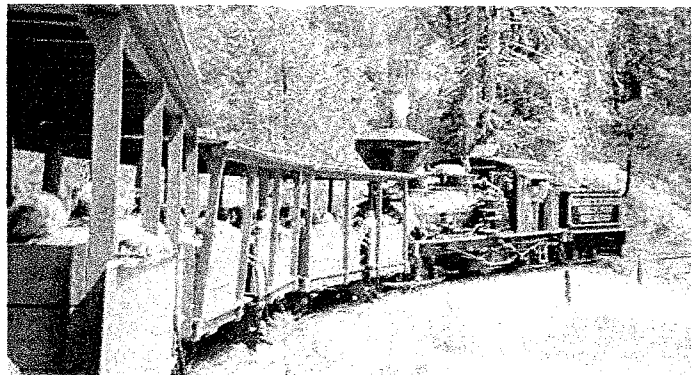
Exploring Treasures of the Sierras

"I could reach right out and literally touch that engine!" That was the most common comment heard when the big, black locomotive chuffed past us as we were eating our lunch after the ride on the Yosemite Mountain Sugar Pine Railroad, with Society member **Glenn McGhee** in the cab as fireman. The sun was shining, the day was beautiful, "Walt Weather," and we were all enjoying the ambiance of being in the presence of a working mountain railroad camp. We had just finished our ride aboard the train and had settled down outside for a tasty lunch. This was the culmination of a wonderful weekend in the Yosemite area.

Oakhurst residents are some of the most congenial, friendly, helpful people around, and we're lucky to have several of them as members of our Society. The NFFC 49EARS Club, located in Oakhurst hold their annual Disney Daze each year at the Elks Lodge on the outskirts of the town. When we arrived at the hall on Saturday, it looked as if it had been decorated for a party with flags on the walls and huge Disney characters scattered around the room. A gold replica of a Disney train ran around the track on stage with the monorail looming over it and a stagecoach sitting in the middle of the display -- past, present and future. The theme fit in with speaker Ed Hardy's presentation to us after lunch. Ed spoke about transportation throughout the ages relating to the Yosemite Valley. Mr. Hardy spent a considerable amount of time researching the Yosemite Valley as he is a long time resident of Bass Lake, a mere eight miles from Oakhurst and served as president of the Yosemite & Curry Company for twenty years.

That evening we were all invited on a sunset cruise around Bass Lake. At 7 p.m. we boarded two pontoon boats -- one piloted by Ed Hardy and one by **Bill Atwood**, (more about Bill later in this article) and were given an extensive

tour, with appropriate patter, around the lake. We learned local history, who's living (or not) where, how deep the lake was, who was not visiting who, how large the lake was, who didn't own land there, where the eagle's nest was and all the necessary and unnecessary facts surrounding the Lake. Bill and his wife, **Carol**, are two of the newest members of the Society, and certainly a couple of the most interesting and gregarious we have the pleasure of knowing. Having lived in the area for a number of years, Bill and Carol know a lot of the local people, and the ins and outs of getting things done. They are the ones to thank for arranging for the boat rides around Bass Lake. Bill teaches "last chance" kids in one of



The Yosemite Mountain Sugar Pine Railroad winds around through the tree-studded hillside.

"A wonderful weekend in the Yosemite area."

the few remaining one-room schoolhouses in the State and is truly the kind of dedicated teacher that all of us would have benefited having as children. Upon arrival on Friday, the members of the Society were invited to their home on Bass

Lake for cocktails and dinner, personally cooked by Chef Bill himself. While indulging on wine, appetizers, succulent top sirloin, delectable pasta, green beans almandine and ice cream smothered in a hot homemade fudge sauce, we sat at one of the five tables set with fine china and beautiful linen, and had several hours to get to know one another better. The wonderful thing about this get together was that this was the first Carolwood event for several of our members and it was a great way of getting to meet and feel comfortable with each other. Many, many thanks to the Atwoods for affording us all that opportunity. We'd also like to thank members **Toni** and **Alan Lagunoff** for all their help in assisting and supporting the Society.

All in all, it was a terrific event shared by many wonderful people. We wish all members could have been there.

(For more information about the Yosemite Mountain Sugar Pine Railroad call 559-683-7273.)

THE MAIL CAR

Last week in Skagway, Alaska John Westfall, a senior engineer on the White Pass and Yukon Railroad, hosted me in the cab as we climbed the White Pass and later toured through the maintenance sheds of the railroad. Incidentally, we experience much success with our behind-the-scenes steam tour here at Walt Disney World.

I was lucky enough to be on duty for the rededication of the *Roy O. Disney* locomotive last month and enjoyed meeting nice people from the Society. I look forward to seeing Walt's Barn at Griffith Park one day.

— *John Blanchard,*
Engineer WDW
Fern Park, FL

The afternoon we all spent together at Ward's home that warm Saturday for the steam up will always be one of the highlights of my life. Even though my wife thought I was nuts, I hand carried my LGB *Chloe* from New Jersey for Ward to sign that day along with a silver marker, and he did so with relish. Ironically, this same locomotive ran one afternoon at the garden railway in EPCOT when all the other bigger motive power had broken down. The piece has occupied a special place in our collection ever since. My wife and I shall be forever in your debt for this wonderful opportunity.

— *John Sanders*
Glen Rock, NJ

I want to compliment the Society for what you are doing to keep the spirit of Walt Disney alive. Walt, even through a rough life, kept a tenacious attitude in his desire to give us an era of innocence. He accomplished that goal.

— *Jim Hayes*
Las Vegas, NV

Always an annual passport holder for Disneyland, we have G-scale around the house with the *Lilly Belle* remaining in the case. Currently we're building a replica of the *Lilly Belle* from blue prints from Railroad Supply Corp.

— *Frank Campbell*
Riverside, CA

I have always had a desire to do model railroading, but

being in the Navy and constantly moving made this difficult. Now that I am retired and will be staying in one place for a while, I am looking at getting into garden railroading. Also, growing up in Southern California and spending many hours at Disneyland I have had a love for Disney and his trains.

— *Harry Landau*
Danbury, CT

I remember well some of the Southern California Live Steam Club activities in the late 1940s and members such as Dick Jackson, Dick Bagley and Ollie Johnston.

— *James Keith*
Cincinnati, OH

We welcome your letters and emails. Correspondence may be edited for length.

CELEBRATING WARD KIMBALL'S LIFE

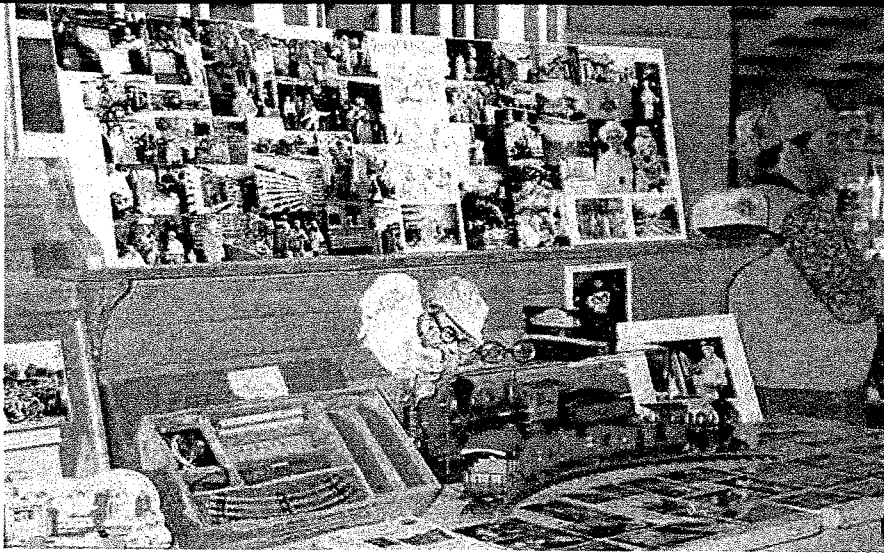


Bob Lemberger dressed as a fireman on July 28 to celebrate Ward Kimball's life. The Disney Barn was opened special that afternoon to accommodate Ward's many fans. Funny clothes were the order of the day. Kendra Trahan stands next to the miniature fire engine provided by Bob for the event.

Kendra Trahan and Steve Waller won prizes for best costume (right).

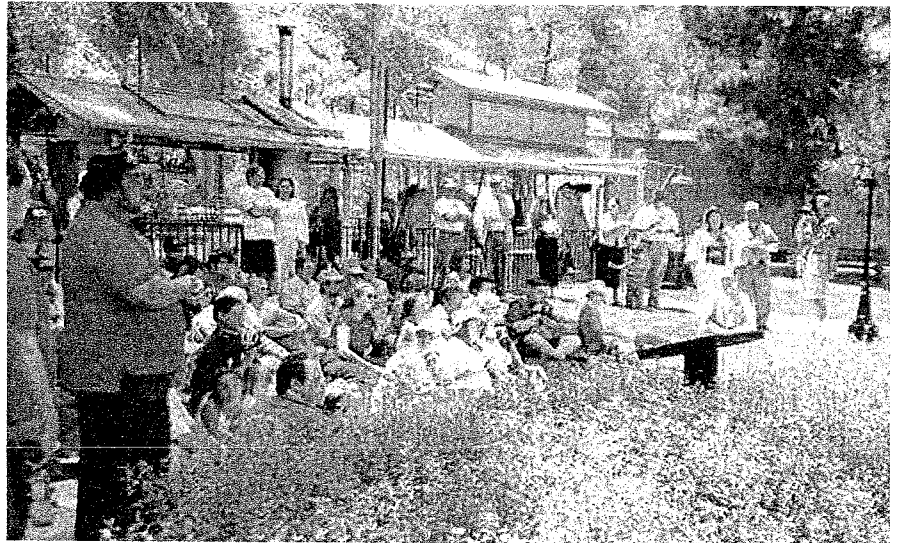


A PICTORAL — CELEBRATING WARD KIMBALL



Many of the Carolwood Pacific Historical Society members brought "Ward" memorabilia to display in Walt's Barn the day of the memorial.

About two hundred people arrived on that special Sunday to honor Ward Kimball and to exchange stories and anecdotes about his life, his humor and his relationships.

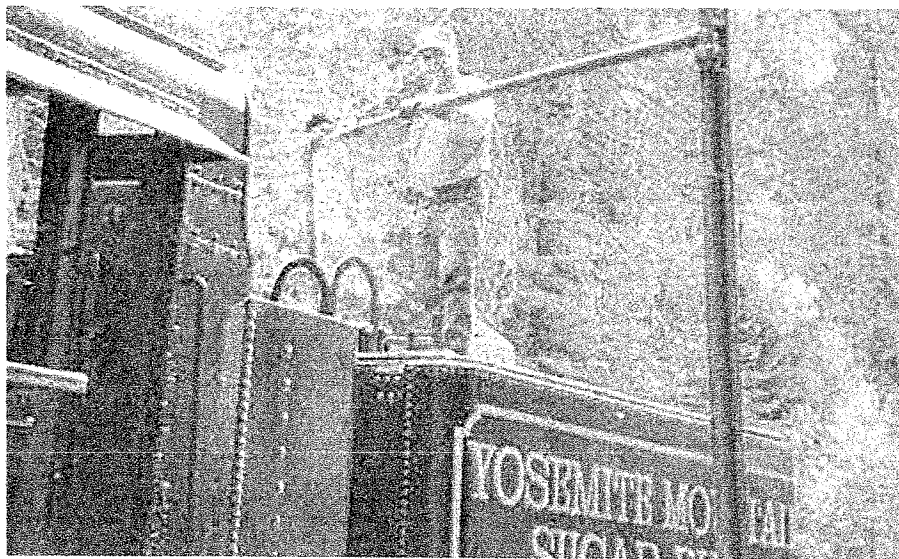


*Walt's Barn volunteer, Society member **Doug Marsh**, supplied "Ward fans" for all of us Ward Fans to cool off with. Many thanks to Doug for being so thoughtful.*

MORE ABOUT THE YOSEMITE EVENT

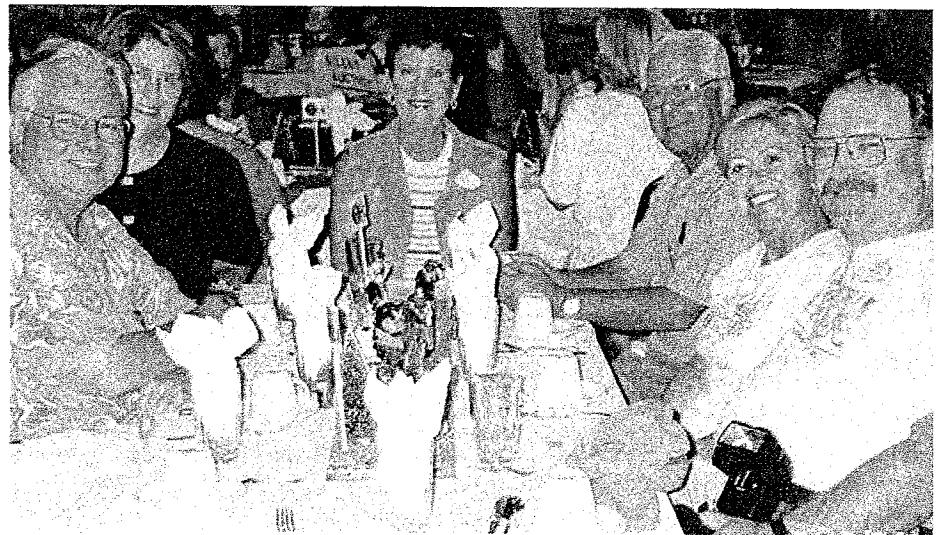
Michael Broggie and Member Bill Atwood share a riotous time at Disney Daze in Oakhurst earlier this month.

(Nice hat, Bill.)



Glenn McGhee was the fireman on board the Yosemite Mountain Sugar Pine train the day we took our ride through the Yosemite hillside. Here he fills the tender with water.

Blake and Charlene Gould, Donna and Alan Wright and Marilyn and Darrell Holmquist enjoy the luncheon during Disney Daze in Oakhurst.



Board of Governors

Michael Broggie
Michael Campbell
Miguel Fernandez
Bob Gurr
Darrell Holmquist
Ollie Johnston
Terry Lynn
Diane Disney Miller
Downs Prior
Scott Rhodes
Bob Witter

Governor Emeritus

David Flesh

In Memoriam

William Norred
Richard Thompson
Ward Kimball

Membership information is available by contacting the Society. Members' names appear in bold font.

The Carolwood Pacific Historical Society, LLC is an independent membership group and is not affiliated with The Walt Disney Company.

Carolwood Pacific Railroad and Society-related logos and fixtures are copyrighted by the Walt Disney Family Foundation. Other copyrighted materials are the property of their respective owners.

Opinions expressed are those of the writers and not necessarily those of the Society or the Walt Disney Family Foundation.

Sharon Broggie, Publisher
Michael Broggie,
Editor Emeritus
Steve DeGaetano, Editor
Darrell Holmquist, Staff Photographer

Contributors:
Michael Campbell
John LeSchofs

Steve Broggie, Webmaster

©2002 Carolwood Pacific Historical Society, LLC
Walt Disney Family Foundation, Inc.

WALT'S C'S OF SUCCESS . . .

COMPILED BY MICHAEL BROGGIE

Observers of Walt Disney's achievements contemplate the reasons why and how one individual succeeded in becoming the dominant influence on family entertainment and recreation throughout the world.

Addressing the question, Walt liked to refer to the Four Cs: "Somehow I can't believe there are many heights that can't be scaled by a man who knows the secret of making dreams come true. This special secret, it seems to me, can be summarized in four Cs. They are Curiosity, Confidence, Courage and Consistency and the greatest of these is Confidence. When you believe a thing, believe it all over, implicitly and unquestioningly."

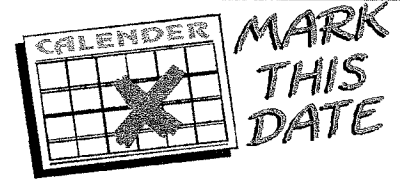
Taking Walt's cue, the following is an expanded list of Cs:

1. **Curiosity: Follow your passion toward the unknown**
2. **Confidence: Once convinced you're right, don't accept barriers**
3. *Courage: Dare to believe in your abilities; they are true possessions*
4. *Consistency: Be dependable, it's the first sign of leadership*
5. **Creativity: Appreciate and foster originality**
6. **Clarity: Define your objectives to yourself, then to others**
7. **Concentration: Maintain focus on your goal**
8. **Competition: Gain strength from your challenges, they help identify your weaknesses**
9. **COMMUNICATION: SPREAD KNOWLEDGE THROUGH EFFECTIVE CONTACT**
10. *Contemplation: Listen to your inner voice*
11. **Commitment: Strive for excellence; stay the course to conclusion**
12. *Character: Protect your reputation; it's your most valuable asset*
13. **Challenge: Constant improvement is achieved when good enough isn't an acceptable standard**
14. *Consideration: Never underestimate the power of your actions; with one small gesture you can change a person's life for better or for worse*
15. *Compliment: Reinforce quality performance and loyalty; but remember, honest achievement doesn't require recognition*
16. **Civility: Apply the "Golden Rule"**
17. **CONVICTION: BELIEVE IN YOUR DREAMS EVEN IF ALONE**
18. *Control: Maintain productivity without compromising quality*
19. **Culture: Practice the freedom to choose that which enriches your life**
20. **Charity: Give back to help others, particularly your time**
21. **Chuckle: Remember to maintain your sense of humor, sometimes it's what gets you through the most difficult of times**

Just a reminder — December is fast approaching! If you have anything to put in the time capsule that will be placed at Walt's Barn in Griffith Park and opened in fifty years, please contact the Society for a form. Forms are also available at the Barn. Items should be presented no later than November 25, 2002.

CAROLWOOD EVENT CALENDAR FOR 2002

Carolwood Pacific Historical Society has exciting events and presentations in the upcoming months! Be sure to mark your calendars.



September 15

Tony Anselmo — Book signing at Walt's Barn

October 3 — 5

California State Railroad Museum — Sacramento

- Thursday — Gala Premiere with a private reception for CPHS members and selected dignitaries at the Sacramento Railroad Museum
- Friday — Open Day / Media Day — a day to discover the secrets of Sacramento
- Saturday — Special presentations / member luncheon and annual un-meeting

Spring 2003

Napa Wine Train Event — Back by popular demand!
Time and date to be announced

Palm Springs, Smoke Tree Ranch II — The Sequel
Time and date to be announced

Please visit the Call Board at www.carolwood.com for more event information.

Letter From the Editor

(Continued from page 1)

the *E.P. Ripley* in front of Main Street Station. Walt Disney World has their "Transportation" series of pins, one showing the *Walter E. Disney*. The Carolwood Pacific Historical Society has also produced some attractive pins commemorating the Walt's CPRR. Pin collectors wanting something different can search for the black and brass oval tie tack produced by Sundance, showing the intertwined "DRR" herald.

"Paper" collectors might have the best luck in their searches. Countless paper items were pro-

duced for the Disneyland Railroad, its predecessor, the Santa Fe and Disneyland, and the Walt Disney World RR. These include a variety of tickets in a multitude of colors, passes (some signed by Walt himself!), and publicity brochures. Park organs like the Disneyland "*Line*," also have articles related to the Disney trains. For those on a budget, postcards showing the Disney steamers can often be had for just a few dollars.

Collectors with more patience (and a little more money) can look for "park" items—collectibles that were not offered for sale to the general public. These items are the "Holy Grail" of the collecting hobby.

Conductor hat badges, uniform buttons, engineer hats, and attraction posters all fit into this category. Searching for cast member-only pieces, like the DRR class ring or hat patches, is both exciting and extremely challenging.

I can't get to Disneyland as often as I would like. Collecting Disneyland Railroad items, though, allows me to sit back and fondly remember other days, when I would listen to the chug of the engine and the wail of the whistle, as the train car I rode circled Walt Disney's Magic Kingdom.

Why not start your own Disney train collection today?

The Carolwood Pacific
Historical Society
1032 Amberton Lane
Thousand Oaks, CA 91320

Email us at:

mbroggie@msn.com or
scbroggie@msn.com

We're on the WEB!
carolwood.com

*We don't have boring
meetings,
we just do fun stuff*

First Class Mail
Address Correction
Requested

Your registration form for the Sacramento Event is enclosed.
You have until September 6 to reserve your seat at the annual un-meeting.

VIEW FROM THE CUPOLA BY MICHAEL BROGGIE

Sad news, again. Last issue we wrote about the passing of CPHS Governor **Ward Kimball**. Now, we're writing about Honorary Member **Morgan Evans**, or "Bill" as he preferred, who passed away on Aug. 10th. He was 92.

Like Ward, Bill was a Disney Legend, receiving this highest of recognition from The Walt Disney Company in 1992. He began his career helping his family during the depths of the Great Depression—having left Stanford and his engineering studies to return to Santa Monica and the local garden nursery of Evans & Reeves, ran by his father Hugh and brother Jack.

His return was fortuitous. In 1950, after the nursery became very successful, a mutual friend recommended to Walt and Lillian Disney that they hire the Evans brothers to design and install landscaping at their new five acre home on Carolwood Drive in the Holmby Hills area of West Los Angeles.

From this successful beginning, Walt wanted to hire Jack to design Disneyland's extensive landscaping. Jack declined but recommended to Walt that he hire Bill. Thus, flowered a beautiful friendship that spawned a five-decade ca-

reer and the landscaping design of every Disney theme park and resort in the world including the new one under construction in Hong Kong.

Bill told many anecdotes that highlighted his productive life with Disney. One favorite led to the designation of "Freeway Collection" on his Main Street USA window. Knowing the freeway system under planning and construction by Caltrans would require the destruction of countless trees; Bill negotiated the right to remove any tree in the path of the growing freeway grid. In the process, Bill invented a method of moving huge trees by inserting a steel rod into a hole drilled through the trunk and lifting the massive tree onto a flatbed trailer for transport to Disneyland.

Walking with Bill through Disneyland or Walt Disney World included frequent references to trees and their freeway of origin. "That's a Ventura cedar. There's a Golden State sycamore and a San Diego eucalyptus. He selected plants and trees with various tolerances for temperature and mixed them in a way that when southern California was hit by a killer frost or torturous heat, the Park's landscaping would only be partially affected. This practice was duplicated in every subsequent Disney project.

Another favorite story concerned the landscaping of the Matterhorn Mountain in 1959. Because the structure had to be skinned

from the top down, Bill and his crew couldn't commence their landscaping task until all construction was completed. The project was running behind schedule and construction crews were working around the clock to get finished by the time a live telecast was scheduled on June 14 to launch the new additions of Bobsleds, Submarines and Monorail. Finally, with less than 48 hours to airtime, Bill got the green light to landscape the mountain. Working nonstop, Bill and his crew got it finished with just a few hours to spare.

Nearly exhausted, Bill finally took a moment to relax by leaning on a section of wrought iron fencing that surrounds the base of the mountain.

Suddenly his quietude was broken, when he heard a comment from nearby, "Humm...looks pretty good!" Bill opened his eyes and looked at the source of the compliment. It was Walt. Bill proudly recalled these were the only words of praise he ever heard directly from his boss during their long association.

Note: Everyone is welcome to a "Bon Voyage Celebration" for Bill Evans being held Sept. 25 at 5 pm, at the Descanso Gardens, 1418 Descanso Drive, La Canada Flintridge.

In lieu of flowers, the family suggests donations be made to charities of choice or the Bill Evans Horticultural Collection Fund at Descanso Gardens. --Ed.