

CAROLWOOD CHRONICLE

Issue 4



Spring 1998

OFFICIAL JOURNAL OF THE CAROLWOOD PACIFIC HISTORICAL SOCIETY

In this issue:

- LA Live Steamers - page 1
- Walt's Barn Relocation - page 1
- Disney Studios Tour - page 2
- New Collectible - page 4
- Marceline Invitation - page 4
- Imagineering Showcase - page 4

C.P. 173 Reunion and Picnic

L.A. Live Steamers Invite Society Members to Meet

Society members and their families are invited to the Los Angeles Live Steamers Spring Meet 1998 and First Annual Reunion of Central Pacific 173 steam engines at Griffith Park on Memorial Day, Monday, May 25. The reunion will focus on one-eighth scale engines like Walt Disney's *Lilly Belle*. Walt was a charter member of the LALS and enjoyed spending time with his fellow railfans at the Griffith Park facility. Members are urged to bring a picnic lunch. The grounds have ample picnic facilities. Besides the Monday, May 25 date, the Live Steamers also will be welcoming Society members on Saturday and Sunday, according to LALS Meet Chairman Jay Carsman, who is also a Society member. Each guest is asked to donate \$3 to the Live Steamers for the day of festivities, which include free rides on scale model live steam trains and opportunities to learn about this fascinating hobby that Walt loved. A special commemorative button has been created for the event.

The event will be held at the LALS facilities located immediately east of the Travel Town Transportation Museum at 5202 Zoo Drive, next to the 134 Freeway (at Victory going east and off at Zoo Drive going west). This will be the site for the relocation of Walt's Red Barn that was the center of his Carolwood

Pacific Railroad.***

(Please see related "Barn" story.)

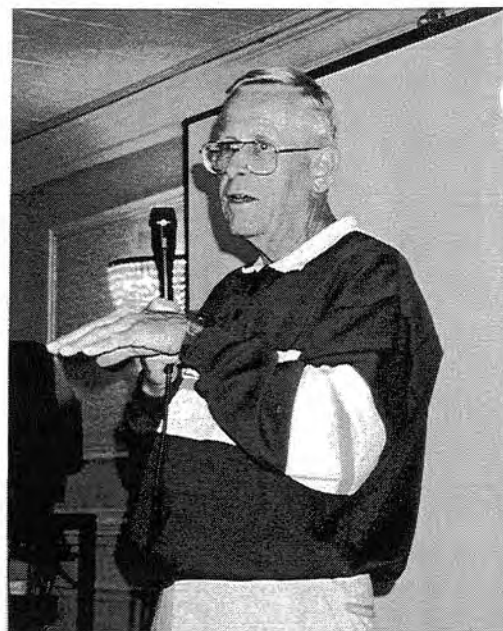


Walt's "Happy Place" Barn Finds a Griffith Park Home

One of the most prized Disney railroad collectibles will soon find a home among of the members of Walt Disney's miniature live steam club, the Los Angeles Live Steamers.

Walt's Barn is being relocated to the Griffith Park site operated by the Live Steamers under an agreement with the Los Angeles Department of Recreation and Parks. Originally seen in Walt Disney's 1949 feature film, *SO DEAR TO MY HEART*, this quaint, midwestern-style barn served as the center of Walt's miniature Carolwood Pacific Railroad that surrounded the

(Continued on page 3)



Society gets Casting Call—Members gather at the corner of Mickey Avenue and Dopey Drive for a group photograph prior to a special behind-the-scenes tour of Disney Studios in Burbank. Later that evening, Bob Gurr, who designed Disneyland's transportation vehicles, entertained the Wrap Party audience with colorful anecdotes recalling his experience as one of the first Imagineers. ©Disney

Seventy Society members received a rare treat: an exclusive behind-the-scenes guided tour of Walt Disney Studios in Burbank. Thanks to Society member Harry Grossman, who is senior vice president of studio operations and facilities, the special tour was set up for Friday afternoon, April 17. Members came from as far as Mississauga, Ontario, Canada, (Jeffery Young) to be at the event billed a "Casting Call."

One of the many highlights was a walkthrough of the main set for *Armageddon*, which was constructed on Stage 3, one of the largest sound stages in the world. Workers removed tons of soil digging 60 feet into the earth. The set recreated the surface of an asteroid with stark, jagged rock formations rising a hundred feet to the ceiling of the stage. In the center of the set was a specially built vehicle, which cost a million dollars to create. Few outside the studio staff and crew have had the opportunity to visit the closed set.

Another highlight was a visit to the Studio Archives and a presentation by Dave Smith. He displayed original documents that were relevant to Walt's railroad interests including samples of the Carolwood Pacific letterhead and baggage tags. The group was one of the first to see the new Frank Wells Building featuring a display of an original multi-plane camera used to film animated productions. The building is named in honor the late president of The Walt Disney Company who was credited with managing

the financial turnaround of the company when the board of directors hired him and Michael Eisner in 1984 to head the vast entertainment empire.

After the "casting call" portion of the day was completed and members got a chance to buy exclusive studio merchandise in the Disney Store, it was time for the "Wrap Party."

A caravan of vehicles headed west for the Sportsmen's Lodge in Studio City. This landmark restaurant has served as the meeting location for many entertainment industry functions including the last meeting Walt Disney held with the board of Retlaw Enterprises. Its owner is Society Board member and train collector Bill Norred.

The Wrap Party got underway with introductions, distributing event hats, film strip themed tickets that were designed by Miguel Fernandez, prize give-aways, and a Disney history review by Society founder/historian Michael Broggie. After dinner, keynote speaker Bob Gurr gave an outstanding address about the early days of Disneyland. Bob was hired in 1953 to design the vehicles in Disneyland. Over the years, the Art Center-trained Imagineer created over 100 designs including Viewliner, Monorail, Autopia vehicles, all the rolling stock on Main Street U.S.A., Mr. Lincoln and much more. His anecdotes brought many laughs and little-known information to the appreciative audience. At the conclusion, Michael presented Bob with a special commemorative medallion of the Carolwood Pacific Railroad. ww

Continued from page 1

Walt's "Happy Place" Barn

Disney estate in the Holmby Hills area of Los Angeles.

The live steam garden railroad operated from 1950 until 1953 and served as Walt's working laboratory for ideas that later were used at Disneyland.

Designed by John V. Cowles, Jr., who was an architect and set designer at Disney Studios, the barn was built by Ray Fox of the studio's carpentry shop, under the direction of Jack Rorex, who was in charge of studio construction. Equipped with woodworking and machine tools to maintain his miniature railroad, Walt referred to the barn as his "Happy Place."

Provided as a loan from the Disney family to the City of Los Angeles, the barn's new home will be at the site of the Los Angeles Live Steamers in Griffith Park, next to the Traveltown Transportation Museum, and near the site where Walt originally planned to build Disneyland.

General contractor Bill Abel of Abel Builders is handling the relocation. The first step was recording the details of the barn's construction. This was done with still photographs, plus extensive videotaping produced by Pentrex Media Group. Bill marked key parts of the barn so it can be reassembled as close as possible to the original. Society member Miguel Fernandez is producing architectural drawings and a site plan.

According to Bill, as his crew removed each board they found that dry rot and termites had damaged about 25 percent of the wooden structure. The shake roof will be replaced with fireproof material resembling the original cedar shingles. Much of the red board and bat exterior, the double door, dovecote, weather vane, windows and casings, and frame will be original. By rebuilding the barn board-by-board, it will have the structural integrity of a new building. A new, reinforced concrete foundation will be poured at the LALS site.

The white fur tongue and groove interior paneling will remain. The Disney family is providing the original CTC (Central Track Control) board, which was built by Lee Adams at the Disney Studios Electrical Shop, along with an antique hand-cranked telephone Walt used to communicate with the main house. Photographic displays of Disney railroad history will be part of the educational exhibit, plus Disney railroad memorabilia and hand tools used by Walt. The Society is producing parts of the exhibit on behalf of the Disney family and the LALS will add exhibits informing visitors about the hobby of miniature live steam railroading.

According to Jay Carsman, vice president of the LALS, the club plans to install a special railway that will bring visitors to the barn. Docents will

conduct tours of the barn, explaining Disney and LALS railroad history.

As a gift to the people of Los Angeles, Walt and Lilly Disney's family is providing the funding for relocating the historic structure. The City of Los Angeles, through the efforts of Department of Recreation and Parks Commission President Steven Soboroff, and Mayor Richard Riordan's Special Assistant Tom LaBonge, the process of clearing various permits and other requirements was rapidly arranged. This was necessary because the Disney estate on Carolwood Drive had a buyer almost immediately after it was listed for sale. The removal of the barn had to precede the close of escrow.

According to a source close to the deal, the new owners wish to raise their young children in the home of Walt Disney. It wasn't known if the buyers plan to install a miniature railroad to run around the estate or will build a replacement barn in "Yensid Valley."***



Society Name Badge Is Familiar Oval

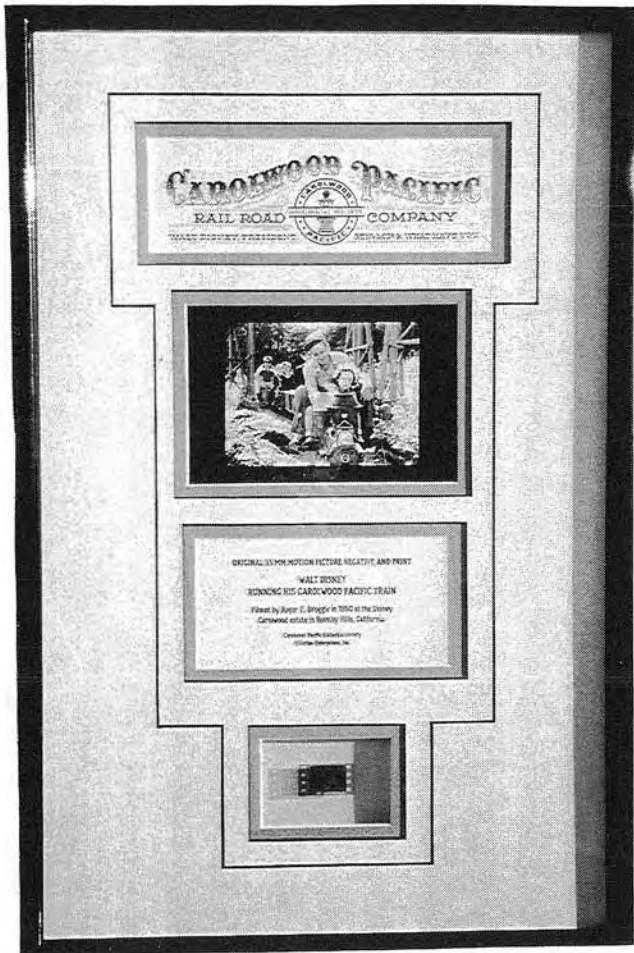
By popular demand, a name badge is now available exclusively to Society members.

Through the efforts of member Mike De-Value, who is an Imagineer, arrangements have been made to obtain oval badges identical to those issued to Disneyland cast members. The only difference is this badge has the Carolwood Pacific Historical Society logo on the bump instead of Sleeping Beauty's Castle.

First names will be engraved on the white face. The back will have a powerful magnet that eliminates pinholes in clothing. A standard pin back may be ordered if preferred. The badges are \$10. Please allow three weeks for delivery. Order from Society HQ in Thousand Oaks, California.

Carolwood Pacific Historical Society
1032 Amberton Lane
Thousand Oaks, CA 91320-3514
805.498.2336 (voice)
805.498.0516 (fax)
broggie@gte.net (e-mail)
Frequent Event Updates:
<http://www.carolwood.com> (web site)

The Carolwood Chronicle is the official publication of the Carolwood Pacific Historical Society, which is solely responsible for its content. Carolwood Pacific and its logo are the property of Retlaw Enterprises, Inc. The Society is not an affiliate of The Walt Disney Company. No portion of this publication may be reproduced without permission of the Society.
 Copyright 1998 Retlaw Enterprises, Inc.
 Disney images: ©Disney



Photograph and Negative of Walt Disney

Own an original, never-published image of Walt Disney at the throttle of his *Lilly Belle* miniature live steam locomotive. Custom print made directly from its accompanying 35mm negative, filmed by Roger Broggie.

There are only 25 original frames of film. Each is carefully assembled with museum quality double matting, acid free materials, and a custom-built wood frame. Dimensions: 23 inches by 15 inches. Order now for delivery before Father's Day. \$200 (CPHS members \$180) plus \$20 insured shipping and handling. Contact the Society at the address or numbers above. *www*

All Society Members Invited to Marceline

Marceline, Missouri is about the same size and population as it was at the turn of the 20th century. In 1906, Walt's family moved there from Chicago to farm on forty acres of land on the outskirts of town. Many years later, Walt memorialized Marceline when he created Main Street USA at Disneyland. In honor of that recognition and to launch the celebration of Walt's Centennial, the City Council of Marceline has renamed Kansas Avenue, its main thoroughfare, "Main Street USA."

All Society members and families are invited to be in Marceline on Sept. 12 for the dedication by Missouri's Governor Mel Carnahan and a full day of Disney hometown activities.

For more information, visit the Marceline web sites at www.waltdisney-railroad.com or www.disneyhometown.com, or call 816-376-2000.

More about this important event in the Summer Edition of the *CHRONICLE*. *www*

View from the Cupola

Imagineering Gets Museum Showcase

A must see for residents and visitors to Los Angeles: An incredible exhibit, *"The Architecture of Reassurance: Designing the Disney Theme Parks."* It's at the UCLA/ Hammer Museum at the corner of Westwood and Wilshire Boulevards in Westwood Village through August 23, 1998. The exhibit provides a unique opportunity to view over 350 original paintings, renderings, sketches, architectural models and Disney memorabilia such as the "Dancing Man" and a Carolwood Pacific RR boxcar. The exhibit is the largest collection ever displayed of original Imagineering art. It's as much a celebration of the creative talents behind the "magic" as it is testimony to the impact Disney Parks have had on functional design. For more information call 310-443-7000. *www* —Michael Broggie