

CAROLWOOD CHRONICLE

Issue No 8



Spring, 1999

OFFICIAL JOURNAL OF THE CAROLWOOD PACIFIC HISTORICAL SOCIETY



Rare Assembly: For the first and perhaps only time, three of Disney's greatest Legends shared the spotlight during the Carolwood Reunion held earlier this year. Morgan "Bill" Evans, Ward Kimball and Ollie Johnston recalled their experiences of working and associating with Walt Disney and the development of the Disney Carolwood Estate. Darrell Holmquist photo.

Carolwood 50th Year Reunion Draws Veteran Disney Legends

Studio City, CA—It was the first combined presentation ever made by the three Disney Legends, who joined in celebrating the 50th anniversary of Walt and Lillian Disney's Carolwood Estate. Ward Kimball, the irrepressible creative master behind many classic Disney characters. Ollie Johnston, the veteran artist whose delicate touch animating humans is among the finest animation art produced by Disney. And, Morgan "Bill" Evans, Walt's personal Carolwood landscaper and the force behind every Disney landscaping project, from Disneyland to the new Animal Kingdom at Walt Disney World.

Joining the venerable Disney Legends were Tony Vanderbaan, who was responsible for managing the Carolwood Estate for 32 years, and Roger Broggie, Jr., one of the three sons of Disney's first Imagineer, Roger Broggie.

The Waterfall Room of the Sportsman's Lodge was overflowing with

CPHS members and guests, who had come from as far as Canada to absorb Disney history first hand from those who were at Carolwood from its beginning 50 years ago.

Ward recounted how he and Ollie first introduced Walt to scale model live steam railroading. Ward and his wife Betty operate the Grizzly Flats Railroad, a full-sized narrow gauge railroad, and own one of the world's greatest model train collections at their home in San Gabriel, California. (Some of their narrow gauge collection is on display at the Orange Empire Railway Museum in Perris, California.)

As Ward recalled, one day in 1947 he was visiting Walt in his office and was shown a Lionel pike Walt had built to give to his nephew, Ted, for Christmas. Until then, Ward wasn't aware that Walt was a model railroad fan. (A few years before,

See "Carolwood Reunion" page 4

Walt's Barn Nears Completion

As we go to press, Walt Disney's Barn is becoming reality in a small meadow surrounded by mature pine trees and miniature railroad tracks. Located in the heart of the Griffith Park facilities operated by the Los Angeles Live Steamers next to Travel Town, the Barn will become the Walt Disney Railroad Museum, filled with rare memorabilia of Walt's beloved hobby. With the total demolition of the Carolwood Estate by its new owner, the fifty-year-old Barn is the only original Carolwood structure in existence. According to Mrs. Disney's will, the property was sold and the proceeds placed in a charitable foundation.

The CPHS is responsible for ongoing coordination of the Barn's exhibits. Walt's daughter, Diane, who developed the idea of loaning her dad's Barn to the City of Los Angeles for use at the Live Steamers facility, is loaning some very special items for display. CPHS Board Member Miguel Fernandez is providing his architectural skills while Member Bill Evans is supervising the landscaping design with help from Michelle Sullivan, an Imagineering landscape designer. Bill Abel, owner of Abel Builders of La Cañada-Flintridge, is the general contractor. According to Bill, as much as possible of the original exterior board and batten will be retained. However, there is heavy termite and dry rot damage. To provide a strong structure, Bill installed a frame that was mostly new wood over a reinforced concrete

See "Walt's Barn" page 5

Save These Dates

Saturday, May 29, 10 a.m. - 5 p.m.: LA Live Steamers Spring Meet 1999, Griffith Park

June 12-13 Queen Mary, Long Beach: Big Train Show

Saturday, June 19, 7 p.m. CPHS social aboard the Delta King Riverboat during Railfair '99 Old Town Sacramento

Sunday, July 18, 5:00 - 7:00 p.m.--Walt's Family & Friends Barn Party
Griffith Park, L.A. Live Steamers, music, food, refreshments, rides on miniature steam trains

Monday, July 19, 10:00 a.m.—Official Barn Dedication, Disney Family, CPHS, L.A. Live Steamers, Government Representatives, News Media, Public Griffith Park, Los Angeles

Sunday, July 25--NFFC Show & Sale, Hyatt Regency Alicante Hotel, Garden Grove, CA

Saturday, July 31: National Garden Railway Convention, Chicago, Wyndam Hotel, Itasca, IL

Railroad Show of the Decade

California State Railroad Museum Hosts Railfair '99

The last major railfair of the 20th century will be held in Old Sacramento from June 18 through June 27, 1999. This is an officially endorsed CPHS activity and all members are encouraged to attend, particularly the opening weekend of the ten-day run.

Due to the large number of people coming to Sacramento, available local hotel rooms are difficult to find. Through CPHS Event Coordinator Tony Friscia, members have a terrific group deal on rooms at the Hawthorn Suites near Old Sacramento for themselves and their guests. To secure reservations, contact the hotel direct at (800) 767-1777 before June 4th and mention the Carolwood Pacific Historical Society.

If you have any questions regarding hotel accommodations call Tony at 925-930-8000 between 9am and 4pm PDT or at 707-557-4477 after 6pm. An additional evening contact phone number is 650-941-1060. For information on the Railfair call (916) 322-8485.

Historic engines and rolling stock are being shipped in from throughout the world and will be complimented by new engines that are run by computers. Commemorative steam train tours and live entertainment will highlight the festivities along with special programs and presentations at the California State Railroad Museum.

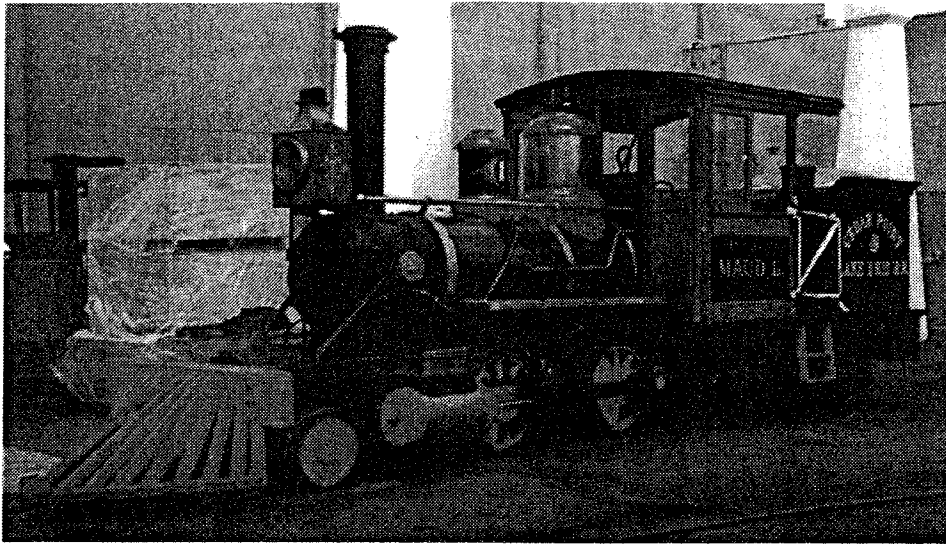
If you attend independent of the hotel arrangements, the Stage 9 store in Old Sacramento (owned by CPHS member Troy Carlson) will serve as a local contact point. We will have a message board there for members to connect with each other. Members will be provided free refreshments. It's located at the corner of Front and Fourth Streets opposite the Delta King Riverboat.

CPHS members will get together in the aft lounge on board the Delta King riverboat on Saturday night at 7pm, June 19th. This landmark vintage riverboat is permanently moored at the Old Town dock. After dinner, we'll end up in a late night chat session at the Hawthorn Suites Hotel, our unofficial hotel site, talking about trains and Walt and all things of interest to CPHS members. A commemorative CPHS patch will be available.



Badge Reminder:

Order your official CPHS Membership Badge now in time for Memorial Weekend and the big Barn Party in July. First name, oval Park-style design, pin back \$10, magnet back \$15. Handling and shipping included.



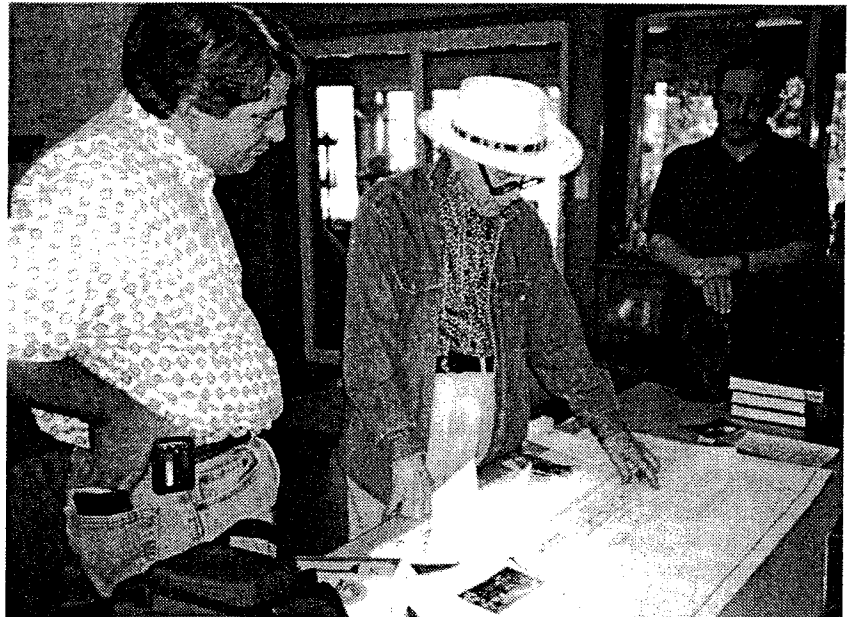
Future Ward Kimball: This vintage Baldwin 2-4-4-T will be totally rebuilt to Disneyland standards and renamed in honor of CPHS Governor Ward Kimball. ©Disney Enterprises, Inc.

Fifth Disneyland Steam Engine to be Named For Ward Kimball

The venerable Ward Kimball will achieve railroading's highest honor next year when his name is applied to a 1902 Baldwin steam locomotive that recently arrived at the steam train facilities in Disneyland.

The 2-4-4-T Forney was obtained in a round-robin trade between Walt Disney World and Cedar Point in Sandusky, Ohio. Originally, Disneyland was supposed to receive an additional locomotive in a trade worked out with CPHS Board Member, the late Bill Norred. Bill received five of the yellow Retlaw 1 coaches in exchange for a Davenport Forney steam engine he had earlier acquired from the Iowa Locomotive Works. (In 1976, the sixth car, which was an observation coach, became the posh *Lilly Belle* Presidential Coach.) Because the engine was heavier than the engines running in Disneyland, it was decided that the engine would go to WDW instead. The engine was never put into service at the Florida Magic Kingdom.

Pressing its need for an additional engine, Disneyland officials launched



Ward's Words: CPHS Governor Ward Kimball points to an Imagineering drawing of the Baldwin engine that will receive his name. Looking on is Scott Smith, a CPHS Member and manager of the Steam Train and Monorail maintenance facilities at Disneyland.

a nationwide search for a vintage steam engine to join the two original engines built at the Disney Studio Machine Shop in 1955 and the two restored antique Baldwins. In 1958, Engine No. 3, *Fred Gurley*, an 1894 Forney, was put into service and the following year, Engine No. 4, *Ernest S. Marsh*, was added. At the suggestion of Ward Kimball, No. 4 was restored in the Studio Machine Shop to resemble the legendary *Montezuma*, Engine No. 1, built by Baldwin in 1871 for the Denver & Rio

Grand Railway.

As luck would have it, Cedar Point was looking for an engine to replace an old Baldwin it owned called *Maud L*. Bill Norred's Forney proved to be just right and a trade was agreed, only this time the traded engine went to Anaheim instead of Orlando.

Ward has been provided a set of Imagineering drawings of Disneyland's latest addition. He will provide his expertise regarding detailing, color, cab design and overall appearance. He has agreed to create two original paintings for the side panels of the headlamp. A fitting Disneyland dedication ceremony will take place next spring when the *Ward Kimball* officially takes its place among the

finest operating steam engines in the world.

Footnote: Engine No. 2, *E.P. Ripley*, is back on line after a full restoration. Engine No. 1, *C. K. Holliday*, is on schedule for its return to duty this July after a full restoration at the steam train facilities. According to T Irby, VP of facilities, engineering and construction, Disneyland's cast members will perform all restoration work on the Park's rolling stock, including the *Lilly Belle* Coach.

Carolwood Reunion

...from page 1

Ward invited Walt to his annual Grizzly Flats steam-up party where Walt got to run the Kimball's mogul, Emma Nevada.)

Excited by this discovery, Ward went straight to Ollie's office and told him, "You gotta see what Walt's got up in his office."

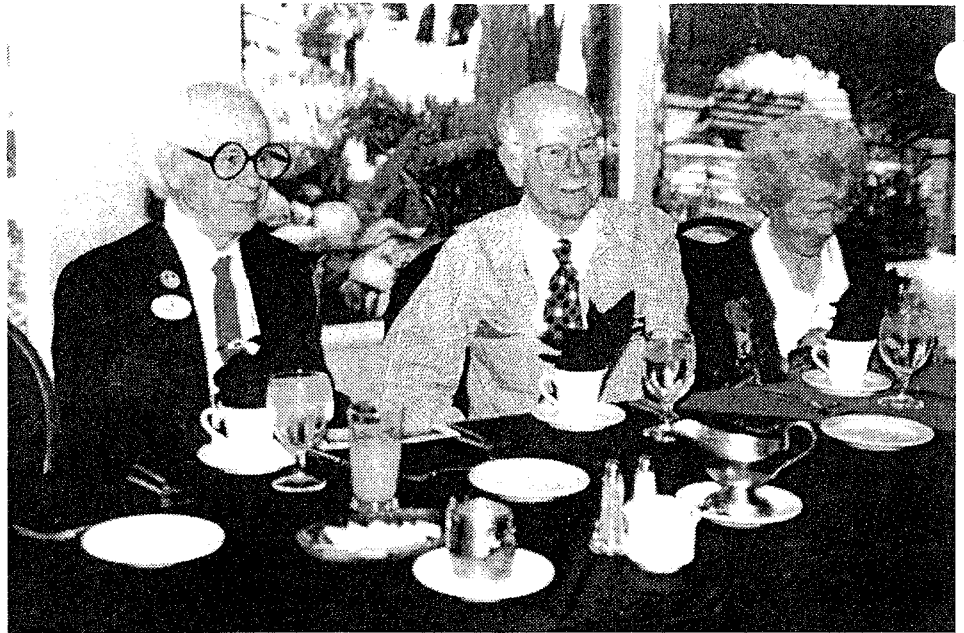
The two animators were welcomed into Walt's inner office and invited to try their hand running the O-gauge layout. "I didn't know you were interested in trains, Ollie," Walt said. "Yes," he replied in his gentle manner. "I have a live steam engine in one-twelfth scale under construction." Walt eagerly told him that he would like to see the engine. After the engine was completed, Walt spent time at Ollie and Marie's home in LaCañada-Flintridge learning everything he could about miniature live steam railroading.

Through their railroad connection, the three men developed a bond that only people with "high iron in their blood" understand.

After acquiring five acres in Holmby Hills on Carolwood Drive, Walt asked Roger Broggie in the Studio's precision machine shop to develop plans for a one-eighth-scale railroad to run on his new estate. When Walt first approached Roger to handle the assignment, he asked if the shop had the necessary resources to build a miniature railroad. Years later, Roger revealed that whenever Walt asked if something could be done, you simply said 'Yes,' then you figured out how you were going to do it."

As luck would have it, Roger discovered that his master draftsman, Eddie Sargeant, was also a skilled live steam railroad modeler and had done drafting assignments for the Southern Pacific Railroad. Eddie was given the assignment to draw the plans for the rolling stock and design the pike (track layout) at the Disney's estate.

Ollie recalled the time he was running the train at Carolwood and the engine derailed. Walt came running up and mockingly accused Ollie of running too fast. Later, Walt derailed at the same location. Ollie thought better of offering a rejoinder. Instead, one of the groundskeepers admitted that he had backed his truck over the area of track, which caused the derailments. Then Ollie noticed that the spring rigging wasn't functioning properly. Checking, he found that a pin had slipped from the rigging. Ollie inserted a roofing nail and solved the problem. Seeming unconvinced, Walt



Smiles all 'round: A light moment during the Carolwood Reunion is shared by Ward, Ollie and Marie. Ward and Ollie were responsible for getting Walt Disney interested in the Hobby of miniature live steam railroading. Darrell Holmquist photo.

good-naturedly lectured Ollie on the finer points of railroad engineering. "You still need some operating instructions," Walt said.

Bill Evans recalled that a mutual friend who recommended the firm of Evans and Reeves to do the landscaping design and installation at Carolwood introduced his older brother Jack to Walt. Bill was in charge of the installation. "I remember that it was Mrs. Disney who wanted beautiful landscaping." Walt was much more interested in his railroad project. In fact, Walt had an attorney at the Studio develop a right-of-way agreement for his miniature railway to run through Lilliar's flowerbeds.

For Bill, this backyard assignment led to the landscaping assignment at Disneyland and every other Disney development in the world. Now in his 80s, Bill still travels extensively and performs show quality assessments for the Disney Parks and Resorts. His current assignments include the landscaping for the new California Adventure Theme Park and Resort opening in 2001 next to Disneyland. He is also directing the landscaping design for the site of the LA Live Steamers facility in Griffith Park where Walt's Barn is being relocated from Carolwood.

Roger Broggie, Jr. remembered how he and his younger brother Michael accompanied their father to Carolwood on

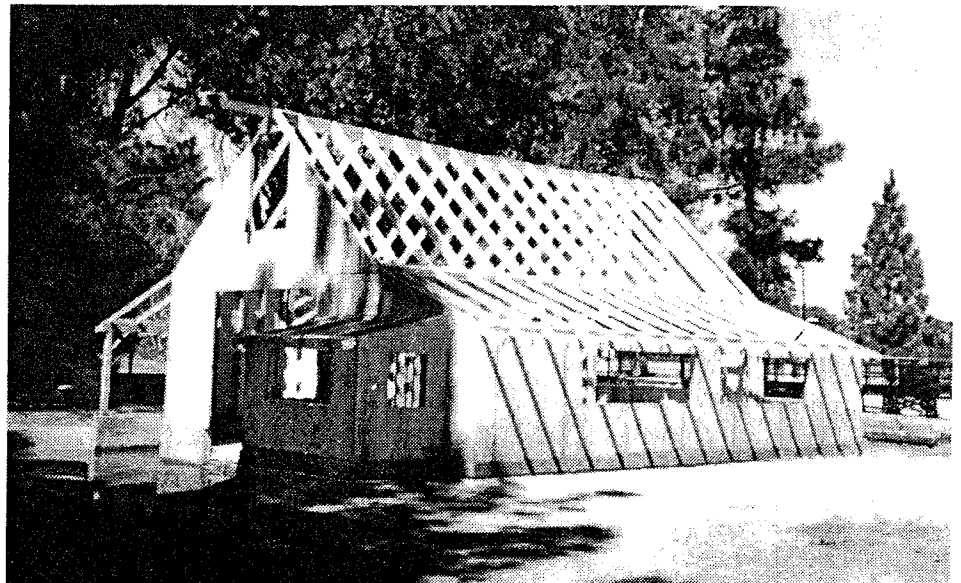
weekends and served as the "crew" for the miniature railroad. A favorite task was fetching the rolling stock from the tunnel and running the cars down the incline to Yensid Valley where that day's consist of freight cars was assembled. The length of the train set was determined by Walt's estimate of the number of invited and uninvited guests that would be arriving throughout the day. Sometimes the crowd swelled to over 150. It was on such a busy Sunday afternoon in 1953, that a derailment caused the engine to roll on its side breaking the whistle and sending a steam of super-heated air across the ground. A young girl stepped into the stream and received painful but not serious burns on her legs. A guest engineer was at the controls and had ignored Walt's instructions about speed on the curves. Immediately after the accident, Walt made the difficult decision to close down the Yensid Valley operation and asked Roger Broggie to store the engine at the Studio's machine shop, where it remained for a long while under the drafting table of CPHS member Bob Gurr. Occasionally, Walt would drop by to visit his Lilly Belle engine, and Bob would watch in amazement as he gently stroked the boiler like a beloved pet.

A special highlight of the Carolwood Reunion was the celebration of Ollie and Marie's 54th wedding anniversary. They were presented with a cartoon drawn by

See "Carolwood Reunion" page 7



Careful Assembly: General Contractor Bill Abel fits an original plank to the exterior of Walt's Barn.



Walt's New Barn Frame: Much of the frame for Walt's Barn is new lumber to create a sturdy structure.

Walt's Barn

...from page 1

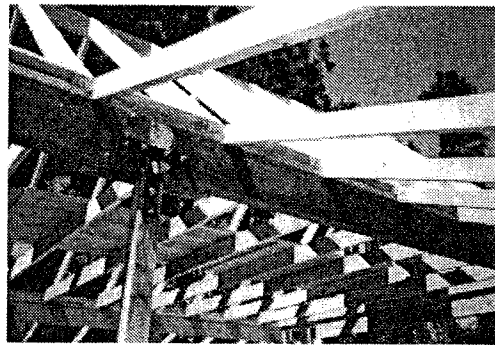
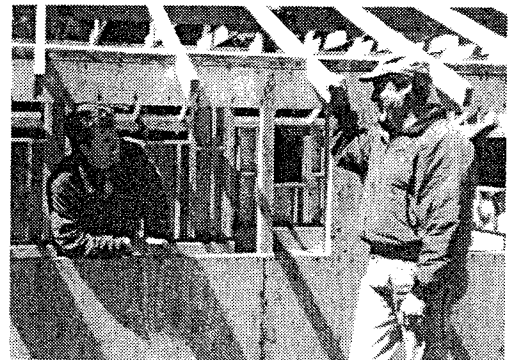
foundation. The interior, which was comprised of hardwood tongue-and-groove that was blind nailed like flooring, was salvaged and will be installed in the restored building.

There will be a private "Disney family & friends" Barn Party on Sunday afternoon July 18 at 5pm. (CPHS members will be invited.) The following morning is the official dedication ceremony at 10 am, Monday, July 19, with city officials, news media representatives, LA Live Steamers, NFFC members and CPHS members.

There will be a sneak preview of the Barn during the LA Live Steamers Spring Meet on Saturday, May 29th over Memorial Weekend. All CPHS members and their families are invited to attend. This family-style event includes dining, dancing and live steam train rides. Suggest you bring a picnic lunch or call Jay Carsman at (818) 366-3771 to make reservations for the roasted chicken dinner (\$8.50).

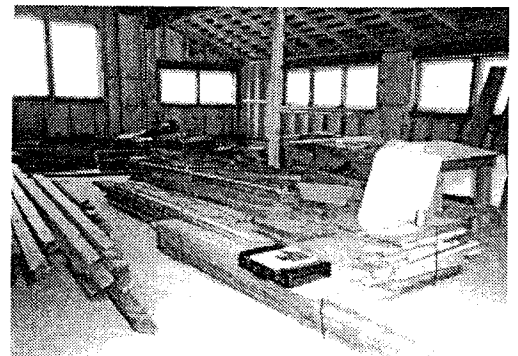
CPHS members are invited to contribute ideas and/or materials for the Barn display, which should be forwarded to the CPHS office in Thousand Oaks, CA. It is suggested that CPHS members make a three-dollar donation to the LA Live Steamers for the event.

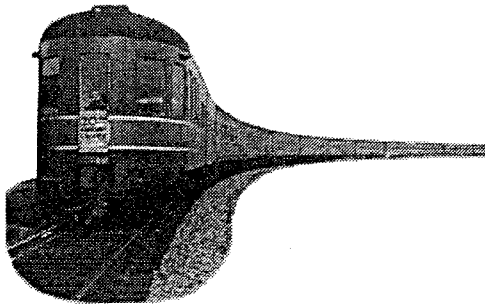
Site Meeting: Architect and CPHS Governor Miguel Fernandez and Bill Abel compare notes at the construction site of Walt's Barn at the LA Live Steamers facility in Griffith Park. Miguei provided updated engineering drawings for the project.



Old & New: A major support beam of Walt's Barn was an original from the Carolwood site.

Erector's Puzzle: Numbered pieces of lumber await reconstruction in the interior of Walt's Barn. Many of Walt's original tools and other railroad artifacts will be displayed in the Barn.





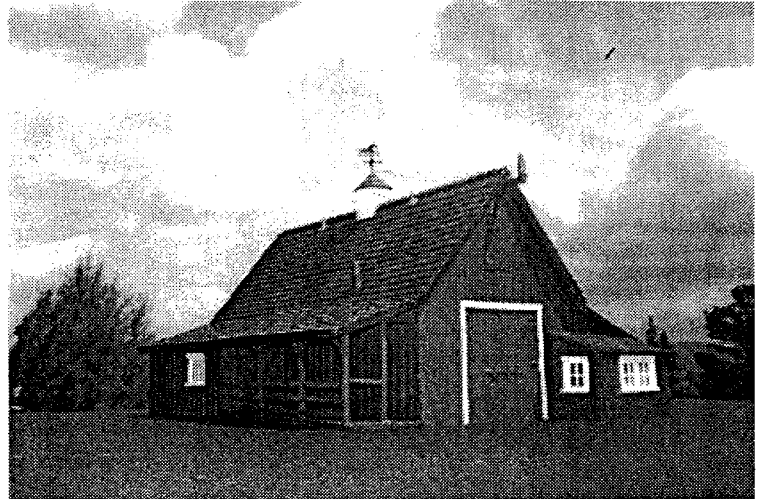
The Observation Car

More pictures from this issue's feature stories.

from "Walt's Barn..."

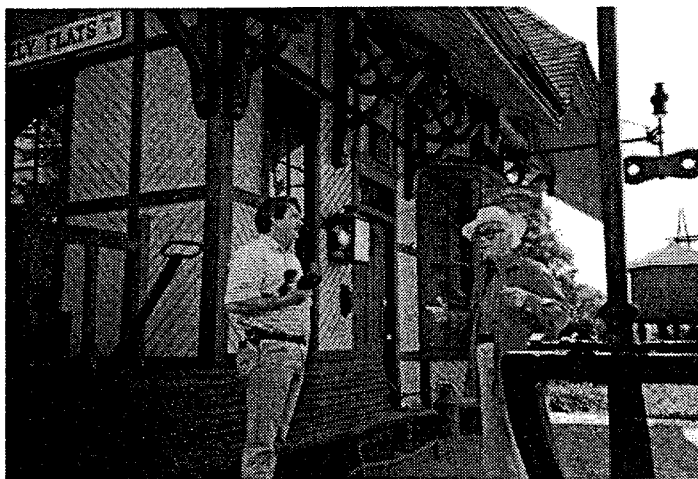


Mini Barn: Michael Broggie holds the 1:24th scale model of Walt's Barn built by CPHS Member Jack Verducci, who is a professional G-scale modeler.

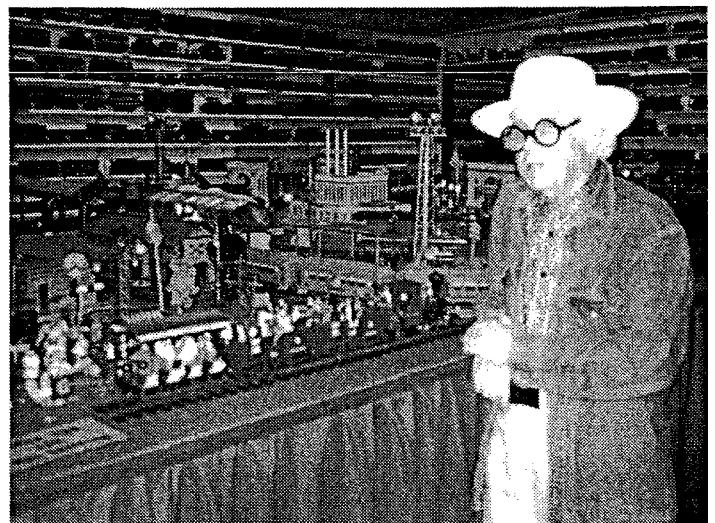


Scale Wonder: Believe it or not, this is the 1:24th scale model of Walt's Barn built by Jack Verducci.

from "Fifth Disneyland Steam Engine..."

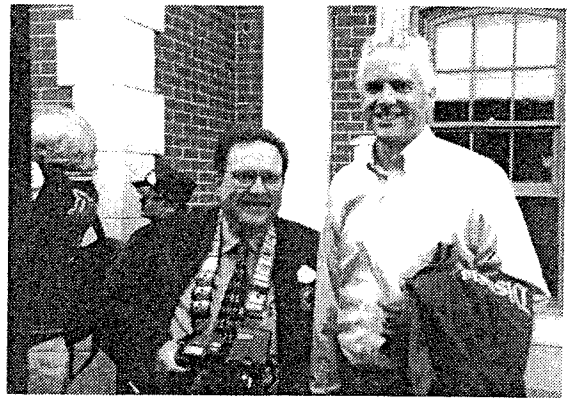
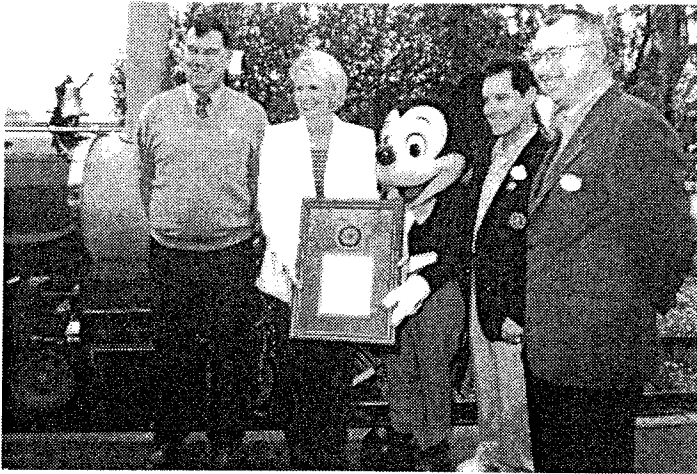


E Ticket Tour: Ward gives Scott Smith a guided tour of the Grizzly Flats Railroad, including the famous Flag Stop Depot from the Disney movie, *So Dear to My Heart*.



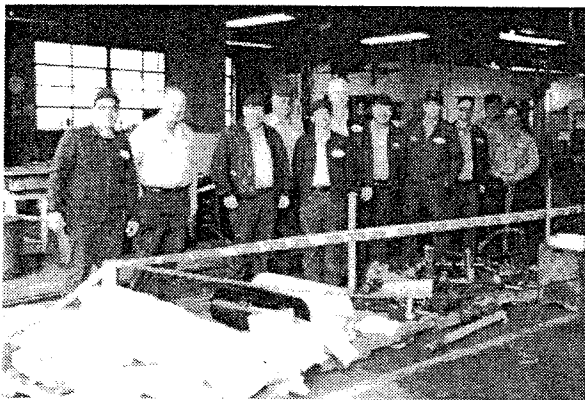
More Trains Than Meets the Eye: Just a corner of Ward's two room collection barn shows the huge array of model trains. In the foreground is LGB's G-scale model of Ward and Betty's Grizzly Flats Railroad.

from the recent Rededication of Disneyland Engine No. 2, "E.P. Ripley"



Happy Faces: CPHS Governors Darrell Holmquist and Bob Witter reflect the mood of the day at the March 27th E. P. Ripley rededication. Bob is Disneyland's director of promotions and was responsible for creating the successful event. Just visible on the left is CPHS member Tony Friscia, no doubt with video camera in hand to document the event.

Honor for Disneyland: Cynthia Harris and Mickey Mouse receive a special recognition plaque presented by Michael Broggie on behalf of the CPHS for "preserving Walt Disney's railroad legacy." Looking on are E. P. Ripley III and "T" Irby. ©Disney Enterprises, inc.



Crew of Experts: Steam train facilities cast members pose behind many of the parts that will be reassembled this Spring into the C. K. Holiday Disneyland Engine No. 1. The crew was recognized by the CPHS for their many years supporting Walt's favorite Park attraction.



Assembled Mass: CPHS members pose on the steps of the Main Street Station for their "official" photo. ©Disney Enterprises, inc.

Carolwood Reunion

...from page 4

CPHS member Tony Anselmo, who is a Disney animator. Everyone in attendance signed the mounted drawing. They also received a cake decorated with the Hallmark Disney character train set.

An emotional moment was shared when Michael Broggie announced the first recipient of the Richard Thompson Award for member participation. Joined at the podium by Richard's widow, Samma, Michael called upon Downs Prior to accept the coveted award. In a rare instance, Downs was at a lost for words. (Downs assembled a large display of Disney railroadiana for the Reunion attendees to enjoy.)

Proceeds from the event were donated to charities

supported by Samma in memory of Richard, and by the late Bill Norred, both of whom were on the CPHS Board of Governors. Bill's widow Charlene and daughter Carrie were also in attendance.

In the final moments of the event, there were drawings for prizes, including two original wooden steps from the Retlaw 1 Disneyland coaches donated by the Norred family. Ironically, Samma won a set and Scott Rhodes won the other. Willie Disbrow won a special cartoon drawing by Ward Kimball, which he personalized for her.

It was a unique afternoon that was filled with treasured memories of a lifetime. Tony Friscia is taping all CPHS events and plans to have copies available when the editing is completed.



Carolwood Chronicle

CAROLWOOD PACIFIC HISTORICAL SOCIETY

1032 Amberton Lane
Thousand Oaks, CA
91320-3514

BOARD OF GOVERNORS

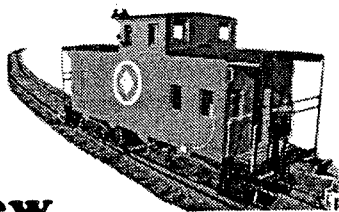
Michael Broggie
Miguel Fernandez
David Flesh
Darrell Holmquist
Ollie Johnston
Ward Kimball
Diane Disney Miller
Downs Prior
Scott Rhodes
Bob Witter

Membership information is available by contacting the Society at the address above or:
<http://www.carolwood.com>
Webmaster: Steve Broggie

The Society is an independent membership group and is not affiliated with The Walt Disney Company.

Carolwood Pacific Railroad and CPHS related materials are copyrighted by Retlaw Enterprises, Inc. Opinions expressed are those of the writers and not necessarily that of Retlaw Enterprises.

Sharon Charmagne, Publisher
Michael Broggie, Editor
Miguel Fernandez, Graphic Design &
Electronic Page Layout
Contributors: R. David Flesh, Ray Haller,
Darrell Holmquist, Downs Prior



View From the Cupola

As we go to press, the news broke that the City of Los Angeles will build a \$10 million Children's Museum near Travel Town and the LA Live Steamers facility in Griffith Park. This is great news for several reasons. It will call attention to this rather neglected area

of Griffith Park where the railroad equipment in Travel Town had become an embarrassment to railfans due to deterioration and vandals. Improved parking is needed along with better directional signage.

We have an idea for the Children's Museum that has been shared with Steve Soboroff, president of the LA Recreation and Parks Commission. If it works out, it could involve loaning one of the world's great miniature train collections to the City of Los Angeles (as with Walt's Barn) for generations of families to enjoy in a public museum.

CPHS member Terry Lynn is advancing on his dream for Marceline, Missouri. As the vision grows, so does Terry's enthusiasm for the boyhood town of Walt Disney. He and his wife, Robbin will be moving to their new home in Marceline, soon. Terry has plans to open a restaurant, a bed & breakfast and a large Disney recreation area including a live steam train operation that would rival Carolwood. In fact, he plans to build a

recreation of the Carolwood layout. Other plans for Marceline include renovation of the train depot into a Metrolink stop and a Disney Family Museum. Ruth Disney Beecher's son Ted has already committed to loan his mother's personal collection to the museum, which is a project of Walt's friends and CPHS members, Rush and Inez Johnson. The Johnson's daughter Kaye Malins and her family live on the forty-acre farm just outside Marceline that the Disney family once owned.

An excellent way to keep up on Marceline's progress toward Walt's 100 Birthday Celebration and other exciting projects is subscribing to *The Marceline Press*. For an annual subscription, send \$35 to the newspaper at 123 Main Street U.S.A, Marceline, MO 64658. Or, call (660) 376-3508 and request a free sample newspaper. It reads like a weekly letter from the small rural hometown many of us never had. One visit and you understand why Walt loved this friendly, unspoiled little town.

—Michael Broggie